

COOPERATIVE CONNECTIONS

Beneath the Black Hills

Charting Untrodden
Miles in Jewel Cave
Pages 8-9

Striking Gold
in Science
Pages 12-13

We Shine as One



Melissa Maher
Manager

This will be the final column for 2023 – hard for me to believe. Up to this point we sure have been graced with beautiful weather.

As I write this report today – both Timber Lake and Dupree are having a Parade of Lights celebration this evening to welcome in the Christmas season, with Eagle Butte the following night. Employees were busy decorating trucks to join in the fun. What an honor to give Santa a ride in all the parades to spread Christmas cheer. Together we all “Shine as One” to keep our members lights on year around.

**LOCATE
YOUR
ADDRESS**

If you locate your address on any of the inside pages of the Moreau-Grand Electric's *Cooperative Connections*, notify us and you will receive a \$25 bill credit. “Eligible addresses will not be on the front or back cover.”



Truck 2 escorted Santa in Timber Lake.



Moreau-Grand Electric's bucket truck escorted Santa in Dupree.

The new headquarters building is really taking shape – by the time you receive this newsletter, concrete floors should be complete inside. The winter months will see framing and inside finish

work. Plans are to have the building complete by May – with the big move-in to follow.

Plans are to not place a lineman up at the McLaughlin warehouse at this time. Linemen out of the Timber Lake area will service the entire north service area. We continue to have a drop box available for members to leave off their payments.

As reported last month – capital credits were applied to your December billing statements from Moreau-Grand Electric Cooperative. Please take notice – the combination of capital credits paid out to the membership in 2023 will exceed \$400,000 including dollars paid to estates throughout the year. 16609 AIRPORT ROAD, Eagle Butte, SD 57625

The board approved the preliminary budget at the November meeting, with the full budget presented at the December meeting. A big project planned next construction season is continued replacement of the underground tie-line running from Dupree to Eagle Butte. Plans call for replacing over 14 miles of three-phase 1/0 URD with three-phase 4/0 URD. The existing cable is unjacketed and has experienced multiple faults over the years. The upgrade will improve reliability to this critical line.

The cost-of-service study being conducted by Power System's Engineering firm is in progress. Plans are to bring the recommendation of such to the January 2024 board meeting. At this writing – I do not have any numbers to share – but know that a rate increase will be imminent with the cost of everything escalating. Again, we have operated under the same rate schedule since August of 2016. It is inevitable that this would catch up to us. More to come in the months ahead.

Thank you once again for your contribution to another successful year for YOUR Cooperative.

May you have HOPE, PEACE, LOVE and JOY this Christmas Season that comes from our LORD and SAVIOR!

COMPARATIVE REPORT	Current (Oct. 2023)	1 year ago (Oct. 2022)	10 Years Ago (Oct. 2013)	% Change in 10 years
Number of Meters	7,135	7,099	6,805	5%
Kilowatt Hours Sold	7,703,098	7,224,017	7,500,469	3%
Cost of Purchased Power	\$531,733	\$414,948	\$457,736	16%
Overall Ave. Rate / kWh Per Member	0.01235	0.01218	0.0113	9%

COOPERATIVE CONNECTIONS

MOREAU-GRAND ELECTRIC

(USPS No. 018-951)

Manager: Melissa Maher

Editor: JJ Martin, Member Services
and IT Director

Directors

Ryan Maher, President
Kerry McLellan, Vice President
Geraldyn Hahne, Secretary-Treasurer
Lois Bartlett
Clint Clark
Larry Hieb
Bob Keckler
Paul Lawrence
Royce Walker
Troy Wall

Attorney: John Burke

Management Staff:

Kent Larson, Operations
Superintendent
Josh Lemburg, Assistant Operations
Superintendent
Kyrie Lemburg, Finance Officer
Jamie Jones, Accountant

MOREAU-GRAND ELECTRIC COOPERATIVE CONNECTIONS is published monthly by Moreau-Grand Electric Cooperative, PO Box 8, 405 Ninth St., Timber Lake, SD 57656-0008, for the members of electric cooperatives across South Dakota. Families subscribe to Moreau-Grand Electric Cooperative Connections as part of their electric cooperative membership. Moreau-Grand Electric Cooperative Connections' purpose is to provide reliable, helpful information to electric cooperative members on matters pertaining to rural electrification and better rural living.

Subscription information: Electric cooperative members devote 50 cents from their monthly electric payments for a subscription. Nonmember subscriptions are available for \$12 annually. Periodicals Postage Paid at Timber Lake, S.D., and at additional mailing offices.

POSTMASTER: Send address changes to: Moreau-Grand Electric Cooperative Connections, PO Box 8, Timber Lake, SD 57656; Phone (605) 865-3511; Fax (605) 865-3340; e-mail mge@mge.coop; Web site www.mge.coop. This institution is an equal opportunity provider, employer and lender.

Design assistance by SDREA

November 21, 2023 Board Meeting Minutes and September 2023 Financial Information

The November 21, 2023, board of directors' meeting was held at the Timber Lake office with the following directors present: Bartlett, Clark, Hahne, Hieb, Keckler, Lawrence, Maher, McLellan, Walker and Wall, and others present: Manager Maher and Finance Officer Lemburg (Delegated Recorder of Minutes).

The Large Power Users monthly report was given by Stephanie Bartlett, which included topics on large power usage and payments.

The Member Services report was given by JJ Martin, which included topics on security cameras installed at the McLaughlin Warehouse, Timber Lake School eighth grade trip to Beulah to tour the facilities, attended SDREA and Rushmore Electric Member Services meetings, JJ and Hunter will attend a drone training, Neon Leon training, advertising campaign, new billboards in Eagle Butte and Timber Lake, energy saving videos available for members, and 2023 annual meeting statistics.

The Operations report was given by Kent and Josh, which included topics on a line move project in Eagle Butte, tree trimming, Dupree planned outage, phasing, in-house safety meeting, and easement issues for new services.

Manager Maher stated that McLaughlin Foreman, Jamey Pateneau, resigned effective November 8, 2023.

Manager Maher gave the Manager's report, which included RUS AG47 loan approval, load control report, cost-of-service study update, general capital credit retirement, Basin Electric capital credit retirement, upcoming Board Leadership Courses in Pierre, electric heat history and the future of the program, Federal grant updates, Basin Electric financials, no change to the WAPA drought adder firm power rate in 2024, correspondence, and

new headquarters facility update.

Rushmore Electric Manager, Kory Hammerbeck, provided a Rushmore Electric update.

The SDREA annual meeting is scheduled for January 11-12, 2024, in Pierre, and all Directors plan to attend.

The NRECA annual meeting is scheduled for March 1-6, 2024, in San Antonio, Texas. No Director expressed interest in attending.

Director McLellan gave the Rushmore Electric Board meeting report, which included the 2024 annual meeting being held in Deadwood, McLellan was appointed as the new Rushmore Electric Director on the SDREA Board, demand charges on electric vehicle charging stations, and approved the 2024 budget.

Manager Maher gave the Rushmore Managers' meeting report, which included roundtable discussions, upcoming Legislative Forum, solar farm by New Underwood, crypto rate, lobbyist update, and Basin Electric margins.

Board approved the following: the agenda, the minutes from the October meeting, new members, refunds, line extensions, financial statistics, disbursements, not to offer the D.C. Youth Tour in 2024, safety report, the 2024 preliminary budget, Manager Maher and Operations Superintendent to manage the McLaughlin Warehouse, union contract negotiations, outside service contracts for 2024, employee Christmas bonus, Director Bartlett as the voting delegate and Director Hieb as the alternate voting delegate at the SDREA annual meeting, and to support Ross Kopren from Grand Electric for the SDREA Legislative District position.

The next board meeting was tentatively scheduled for December 19, 2023, at 8:30 a.m., in the Timber Lake office.

September 2023 Financial Information

	SEPT. '23	SEPT. '22	YTD 2023
Operating Revenues	\$913,784	\$932,471	\$9,701,138
Cost Of Power	\$505,950	\$490,990	\$4,597,090
Cost Of Electric Service	\$1,042,464	\$949,207	\$9,407,772
Margins	\$(54,144)	\$43,795	\$516,165
kWh Purchased	7,211,247	7,363,043	81,890,681
kWh Sold	6,529,736	6,818,075	75,909,474

January is National Radon Action Month

Radon is a Natural Danger

About one in 15 homes in the U.S. has radon levels at or above the the EPA action level, according to the National Cancer Institute. You can't see or smell radon, and scientists estimate 20,000 lung cancer deaths in the U.S. each year are attributed to it.

Radon is produced from a natural breakdown of uranium in soil, rock and water. It enters homes, offices, schools and other buildings through cracks in floors and walls, construction joints or gaps around service pipes, electrical wires and sump pits. The Environmental Protection Agency reports elevated levels of radon gas have been measured in every state and estimates nearly one out of every 15 homes in America has elevated radon levels.

People who breathe in these radioactive particles, swallow water with high radon levels or are exposed to radon for a long period of time are susceptible to lung damage and lung cancer. Smokers who are exposed to elevated levels of radon gas have a 10 times higher risk of developing lung cancer, according to the Centers for Disease Prevention and Control.

It may take years before health problems appear. Your chances of getting lung cancer from radon depend mostly on:

- How much radon is in your home
- Where you spend most of your time (the main living and sleeping areas)
- The amount of time you spend in your home
- Whether you are a smoker or have ever smoked

Test Your Home

Old homes, new homes, homes with basements and homes without basements can have radon problems. Testing is the only way to determine how much radon is present.

Consider hiring a professional tester. Short-term (2-90 day) and long-term (more than 90-day) test kits are available, with the long-term kit producing more accurate results. The EPA website can help you find a radon test kit or measurement and mitigation professional near you. Do-it-yourself test kits also are available at many local hardware stores.

No level of radon exposure is considered completely safe, however the EPA only recommends reducing radon levels in your home if your long-term exposure averages four picocuries

per liter (pCi/L) or higher. A pCi is a measure of the rate of radioactive decay of radon gas. This decay causes radioactive particles that can get trapped in your lungs when you breathe.

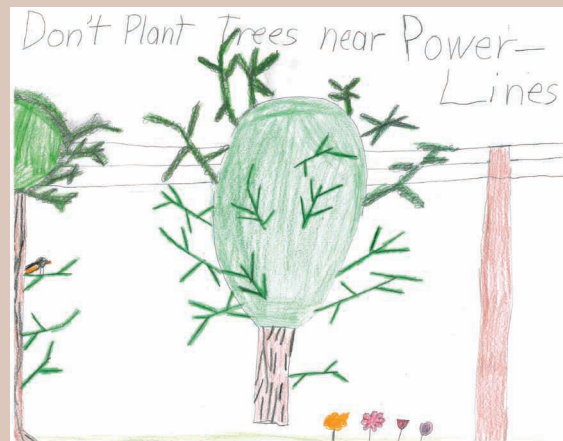
Reduce Radon Gas in Your Home

The American Cancer Society says a variety of methods can be used to reduce radon gas levels in your home, including sealing cracks in floors and walls and increasing ventilation through sub-slab depressurization using pipes and fans.

The EPA recommends using a state or nationally certified contractor, because lowering high radon levels often requires technical expertise and special skills. Two agencies have set the standard for participants seeking certification:

- The American Association of Radon Scientists and Technologists
- National Radon Safety Board

Always test again after the work is finished and then every two years. The U.S. Environmental Protection Agency has designated January as National Radon Action Month, a time when health agencies across the country urge all Americans to have their homes tested for radon.



Don't Plant Trees Near Power Lines

Annette Tschetter, Age 9

Annette Tschetter instructs readers to not plant trees near power lines. Annette is the daughter of Ryan and Elaine Tschetter from Revillo, S.D., members of Whetstone Valley Electric.

Kids, send your drawing with an electrical safety tip to your local electric cooperative (address found on Page 3). If your poster is published, you'll receive a prize. All entries must include your name, age, mailing address and the names of your parents. Colored drawings are encouraged.

SOUPS & STEWS

PUMPKIN APPLE SOUP

Ingredients:

3 tbsps. butter
1 cup finely chopped onion
2 tps. pumpkin pie spice
1 tsp. ground ginger
1 can (15 ounces) pumpkin
1 cup chunky applesauce
3 1/2 cups chicken broth
3/4 cup heavy cream

Method

Melt butter in large saucepan on medium heat. Add onion; cook and stir 5 minutes or until softened. Stir in pumpkin pie spice and ginger.

Stir in pumpkin, applesauce and broth until well blended and smooth. Bring to boil, stirring occasionally. Reduce heat to low; simmer 5 minutes. Remove from heat. (If a smoother soup is desired, place mixture in batches in blender container; cover and blend until smooth.) Stir in cream. Heat gently before serving, if necessary.

McCormick.com

CREAMY CHICKEN NOODLE STEW

Ingredients:

1/3 cup butter, cubed
1 med. carrot, shredded
1 celery rib, finely chopped
1/3 cup all-purpose flour
1 carton (32 oz) chicken broth
1 cup whole milk
1 cup uncooked kluski noodles or other egg noodles
2 cups cubed cooked chicken
1 1/2 cups shredded cheddar cheese
1/4 tsp. salt
1/4 tsp. pepper

Method

In a large saucepan, heat butter over medium high heat; saute carrot and celery until tender, 3 to 5 minutes. Stir in flour until blended; gradually add the broth and milk. Bring to a boil, stirring constantly. Cook and stir until thickened, 1-2 minutes. Stir in the noodles. Reduce heat; simmer uncovered, until noodles are al dente, 8-10 minutes, stirring occasionally. Add the chicken, salt and pepper. Cook and stir until the chicken is heated through. Stir in the cheese until melted. Serve.

**Susan Mitzner
Balaton, Minn.**

CHICKEN NOODLE SOUP WITH ROTISSERIE CHICKEN

Ingredients:

1 tbsps. vegetable oil
1 1/2 cups chopped carrots, (about 1/2-inch)
1 1/2 cups chopped celery, (about 1/2-inch)
1 cup chopped white onion, (about 1/2-inch)
1 tbsps. rotisserie chicken seasoning
4 cups chicken stock
4 cups medium egg noodles
2 cups chopped rotisserie chicken
1 tbsps. parsley flakes

Method

Heat vegetable oil in large saucepan on medium-high heat. Add carrots, celery and onion; cook and stir 8 to 10 minutes until softened and lightly browned. Stir in Seasoning. Cook 1 minute.

Add stock and egg noodles. Bring to boil. Reduce heat; simmer 8 to 10 minutes until noodles are just tender.

Gently stir in chicken and salt. Simmer 2 minutes longer. Remove from heat. Stir in parsley to serve.

McCormick.com

Please send your favorite recipes to your local electric cooperative (address found on Page 3). Each recipe printed will be entered into a drawing for a prize in December 2023. All entries must include your name, mailing address, phone number and cooperative name.

Tips to Stay Warm and Save Energy This Winter

Q: My winter energy bills are typically higher. Can you offer advice on how to lower bills during colder months?



Miranda Boutelle
Efficiency Services
Group

A: Colder weather can increase energy use and bills since heating accounts for the highest wintertime energy consumption in most homes. The amount of energy used to heat your home depends on your equipment, how you use it and the efficiency of your home's shell – the building components that separate the indoors from the outdoors.

It's important to know how your home is heated so you can make informed decisions on your energy use. It also helps you prepare for upcoming bills and avoid surprises that impact your budget. A forced-air furnace is the most common type of heating system and is fueled by natural gas, propane, oil or electricity. Heat pumps are growing in popularity and available for forced-air systems. If you have a forced-air system, check the filter regularly and replace when it's dirty. Ductless heat pumps, or mini-splits, boilers, radiant heat, baseboard heaters and electric resistance heaters are other common heating system types.

If you don't know what type of system you have, find the model number of your equipment and look it up online. You'll find information about the kind of system, how efficiently it operates and recommendations for servicing it, which can improve system efficiency.

We use energy to make our homes comfortable. The easiest and lowest-cost way to save money on heating is to keep your thermostat as low as your comfort will allow. The closer your home's temperature is to the outdoor temperature, the less energy is used.

The U.S. Department of Energy recommends a thermostat setting of 68 degrees in the winter while you are awake and lower when you are

asleep or away from home. Keep in mind that setting the temperature too low can cause pipes to freeze or moisture issues in some geographic locations.

Adding an additional layer of clothing, slippers or a hat can keep you comfortable in a cooler home.

Do you use electric resistance space heaters to heat a room or small section of your home? If so, you may see an increase on your electric bill. For example, let's say you use a 1,500-watt electric space heater to warm your living room while you watch TV or read a book. Operating that space heater for two hours a day at the U.S. average electricity rate of about 16 cents per kilowatt-hour will cost you about \$15 a month. Operating that same space heater for 12 hours a day will cost you about \$90 a month.

If you choose to use space heaters, use them safely. Keep them three feet away from anything flammable, do not leave them unattended and plug them directly into the outlet, not an extension cord or power strip.

Just as we put on a windbreaker to keep cold winds from blowing through a sweater, your home also benefits from blocking air movement. Air sealing can make a big improvement in the comfort of your home as well as provide energy savings. A common air sealing practice is applying weatherstripping to exterior doors and windows. You can also seal around plumbing penetrations to help eliminate drafts. A gap often exists between the drywall or wood and the plumbing pipes and drains. Filling these gaps with expanding foam can reduce drafts in bathrooms and kitchens.

Cold, windy winter days are the perfect time to find opportunities for air sealing. Rattling doors or moving curtains can indicate air leakage. Air leakage can occur where two different materials come together, like drywall and trim work. Cracked plaster and gaps in drywall can also cause drafts. Sealing the gaps saves energy and improves comfort.

As outdoor temperatures dip this winter, take a few proactive steps to maintain comfort in your home and keep your energy bill in check.



Jerry Hammerquist, middle, receives the Rural Neighbor Award.

Jerry Hammerquist

Honoring a Cooperative Leader

Shannon Marvel

shannon.marvel@sdrea.coop

It's a small wonder why someone like Jerry Hammerquist would win the 2023 Rural Neighbor Award, sponsored by Touchstone Energy Cooperatives. He's a community rancher who values his neighbors.

"Well it's pretty easy in our neighborhood to be a good neighbor because we've got good neighbors. We help them, they help me," Hammerquist said.

"There's nothing like having good neighbors, I'll grant you. We have the best neighborhood in South Dakota."

Hammerquist lives and ranches on the farm his grandfather first homesteaded in Caputa about 140 years ago.

When his father passed away in 1960, Hammerquist was a senior in high school.

"I got my classes changed so I could work on the ranch, then I started working for neighbors and sale barns. My wife got to working for the attorneys. And we got on with the federal U.S. Attorney. Without her, I wouldn't have made it. We ended up

having two kids, seven grandkids, and one great grand kid. Caputa is where I grew up. I'm still here," Hammerquist said.

Hammerquist got his start in the cooperative world when he was asked to be on a committee to find a candidate for the election in his area.

"I could not find any, so I was told to put my own name in – not thinking a thing about it," Hammerquist recalled.

He won the 1984 election. Back then, Hammerquist said things were simpler.

"We didn't have any complaints, it was very easy to start out with. Then I got to be an officer, and we grew like crazy," he said.

For almost four decades, Jerry has faithfully served as a board director for West River Electric Association for an impressive 39 years, 20 of those years as board chairman.

Hammerquist said it was an interesting time when he was the chairman of the Action Committee for Rural Electrification fundraiser. During that time, Hammerquist was able to get many people to donate to the fundraiser.

"I had a little trouble cooking the egg sometimes. It was a very good experience for me," he said.

Hammerquist not only manages a thriving ranch but has been a valued member of the Elks Club, Central States Fair, Western Junior Livestock Show, and the Western South Dakota Buckaroos.

He's served as a past president and director of the Pennington County Agricultural Stabilization and Conservation Service Farmers Home Administration.

Currently, he holds the position of president on the Rapid Valley Water Conservation District Board and has previously led Rushmore Electric and chaired Action Committee for Rural Electrification (ACRE) on behalf of the South Dakota Rural Electric Association.

He's also been recognized with significant community agricultural awards, including the Catalyst Club Good Neighbor award in 2010 and Ag Producer of the Year in 2018.

He's a recipient of the Black Hill Stock Show Hall of Fame/Silver Spur Award.

His advice to those who follow in his path is to remember that you're member owned.

"The customers do come first. And the employees," Hammerquist said. "It was all a real learning experience."



Jewel Cave's walls glisten with a coating of calcite crystals coating that give this cave its unique name. *Image credit: NPS*

BENEATH THE BLACK HILLS

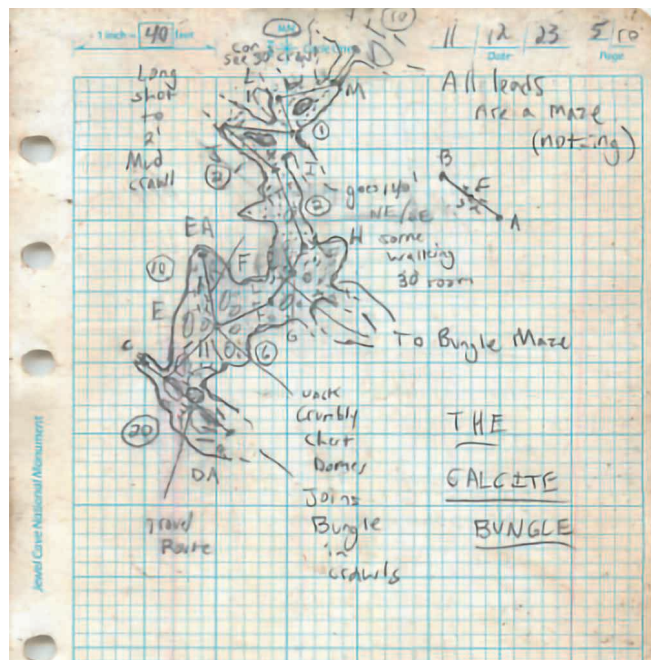
Charting Untrodden Miles in Jewel Cave

Frank Turner

frank.turner@sdrea.coop

In the depths of the Black Hills lies an immense domain of underground caves renowned for their untouched beauty, enticing tourists with the opportunity for stunning photography and expert-led tours. Digging a little deeper, however, reveals that many of these unsuspecting attractions are actually home to a vast network of rooms and passages where no human has ever set foot before. Jewel Cave National Monument, located west of Custer and celebrated for its unique, crystal calcite coating, is one such subterranean cavern that continues to be a frontier of exploration.

Jewel Cave has thousands of miles of unexplored passages, crawlways and chasms that await discovery, making it one of the largest cave systems in the world. The immensity of Jewel Cave and others like it in the Black Hills has inspired multiple



A field sketch from the four-day Veterans Day weekend expedition. *Image credit: NPS*

generations of ambitious cave explorers who have devoted years of their lives to mapping out new areas of these underground expanses.

Despite their efforts, only a small fraction of Jewel Cave has

been navigated and mapped, leading to new cave discoveries being recorded even now.

Recently, a group of National Park Service volunteer cave explorers, led by volunteer Chris Pelczarski, expanded the known limits of Jewel Cave in an expedition over Veterans Day weekend of this year.

In total, their journey lasted four days. Bringing only what they could carry, the small group of cavers wriggled through miles of passages without natural sunlight or ready supplies to ultimately be the first to step into what was previously untrodden terrain.

To achieve their goal, the volunteers tackled the 3-D maze that defines the Jewel Cave network, hiking and climbing steep underground terrain. Despite the challenge, Pelczarski said the ending discovery made the whole journey worthwhile. When discovering something new, the challenge pales in comparison.

“The experience of pushing the edge of something is very unique,” said Pelczarski. “When entering a new space, it weighs on you that it’s the first time that a human has ever interacted with that space. As explorers, we have an incredible amount of responsibility because we are the ones who share that story with others and set the tone of that space.”

In total, the explorers discovered and charted just over one mile of new passages during their Veterans Day expedition, uncovering new passages and even a distinctive split in the rock their group named ‘Fruit by the Foot,’ due to the volunteer group garnering a “fruitful yield” of discovery from the rock formation.

The broader work of these cavers has led to several breakthroughs over the years, including the discovery of Jewel Cave’s first cave lake, Hourglass Lake.

“In 2015, our explorers got to a point where the lowest part of the cave dipped into the Madison Aquifer. It was Jewel Cave’s first cave lake,” said Michael Wiles, Chief of Resource Management at Jewel Cave National Monument. “Since that initial discovery, 12 more lakes have been

found within Jewel Cave.”

With the possibility of discovery around every corner, Wiles regards volunteer explorers like Pelczarski as torchbearers in a continuing legacy created by the many cave explorers that came before them, including South Dakota caving legends Herb and Jan Conn and Wiles himself.

“Herb and Jan are icons in the Black Hills area and throughout the world because they were the first to document and map the cave back in 1959,” said Wiles. “They fell in love with the cave and it really captured their imagination.”

Together, Herb and Jan discovered the first 70 miles of Jewel Cave. Building from Herb and Jan’s initial discoveries, Wiles, with the help of volunteers like Pelczarski,

has been involved in the mapping of an additional 150 miles of cave since the Conns retired.

To date, 218.8 miles of Jewel Cave have been discovered. However, Wiles explained that barometric airflow studies indicate that the cave could be up to 14,000 miles long, and only 3% of the cave’s estimated total length has been mapped and discovered.

“Jewel Cave, for practical purposes, isn’t going to end,” said Wiles. “We know that the cave is hundreds if not thousands of miles long and that, alone, is exciting.”

With only a fraction of the total cave discovered, it’s evident that several years of cave discoveries lie ahead.



Volunteer cave explorer Dan Austin sketching a passage of Jewel Cave. Using coordinates to draw a survey line in the book, Austin draws the cave walls around the line to represent the cave walls around him, adding additional notes as needed. *Image credit: NPS*



It Takes a Village

**JJ Martin**

Member Services
and IT Director

It takes a village, or in this case, a region of communities. On Sept. 14, 2023, students from all over MGE's service area participated in Freshman Impact, a drug and alcohol awareness and prevention program that started in 2006. Born out of concern about an increasing trend in underage drinking and driving, Freshman Impact strives to educate and enlighten students on the ramifications of poor but preventable decision making. To do this, a group of

communities must come together and leave a lasting impact on area teens. The monumental task of coordinating all of these moving parts was undertaken by three volunteers.

Volunteer Firefighter Shad Bollinger, Timber Lake School Counselor Shanna Martin, and Dewey County Sheriff's Deputy Kyle Nilson saw the value of Freshman Impact and wanted to bring it to Timber Lake.



Students race to see who can buckle and unbuckle seatbelts the fastest.

M-G: What made you want to bring Freshman Impact to Timber Lake?

Shad: I went to a few Freshman Impact Programs in Faith, and I think it's a really good program, and I believe it puts a good perspective on what can happen when people make bad choices.

Shanna: We have been attending in other locations for several years but weren't able to attend last year. In a conversation with the founder of the program, he said he had heard from several local people who volunteered at other locations that they would like to see one in our area and asked if I would be willing to help coordinate one. It is important to provide this learning opportunity to students, so I agreed.

M-G: What did it take to become a coordinator for Freshman Impact?

Kyle: We went out to Rapid City, SD for a three-day 12-hour-a-day course.

M-G: What effect do you think it had on the kids?

Shanna: I think it had a positive impact. The students were provided a lot of information and situations to consider, helping them make healthy decisions and to care for themselves.

In the first half of the day, Students were randomly assigned to seven different groups. Every group spent 25 minutes at each of seven learning stations. Four stations were in middle school classrooms, featuring area professionals presenting information about mental health, healthy relationships, vaping, and drugs. Three outdoor

Continued on next page



Volunteer Firefighter Keith Jewett explains significance of VFDs and equipment to students.

stations consisted of Battle of the Belts, first aid and emergency care, a firefighter/ems competition, and a fatal driving course, in which students drove a small course in a side-by-side wearing visual impairment goggles. Many cones were sacrificed on this day, demonstrating the magnitude a simple decision can have on lives.



Students drove a course with vision impairment goggles on.

M-G: How do you feel the event went?

Shad: There was just so much going on at once, but after seeing all the volunteers show up, get to work, and help put the program on, it was amazing and went very well.

Shanna: Really well! Everyone put so much time and care into creating an effective program for our area's students, and it all paid off. Sometimes the heaviness of the day is a lot for students to cope with on the day of the program, but we had counselors there to help them work through it. I hope that it has a lasting positive impact on them all. If it saves a single life, the program is a success!

After lunch, the tone of the day changed from exciting

and educational to hushed and somber. The students had to come to terms with how fragile life can be as they bore witness to a simulation that, unfortunately, happens all too often. You will find no account of it here, as it must be viewed firsthand to be most effective.

As close as it gets to reality, Freshman Impact's simulation sent a clear message to over 120 area teens: decisions have consequences. It was only through the cooperative effort of the local coordinators, volunteers and first responders, area schools, and Freshman Impact Staff that this event was possible.

M-G: How has the community stepped up?

Shanna: To put it simply, our Freshman Impact program would not have happened without the community's support.

Shad: We honestly live in the greatest area. Having this program and seeing how much this area was willing to help make a difference.

M-G: What advice do you have for young adults?

Shad: Make good health choices and think before you do something that could affect the rest of your life.

Shanna: Care for yourself and others. Make healthy decisions that will benefit you and those around you. Seek help when you feel alone and don't know what to do.

Kyle: Make responsible decisions because one little thing could affect the rest of your life.

Our service area may be sparsely populated, but it's cooperative strength cannot be denied.

I implore every member, if able, to get involved with a Freshman Impact program. It is such a moving and rewarding experience.

You can get in touch with Freshman Impact Founder Rick McPherson at r.mcpherson@freshmanimpact.org to get involved.



MOREAU-GRAND
Electric Cooperative
A Touchstone Energy® Cooperative



smart hub



Merry CHRISTMAS

THE MOREAU-GRAND ELECTRIC COOPERATIVE 2023

We sincerely wish our member-owners a Merry Christmas and a Happy New Year. Our offices will be closing at 12 pm on Friday, December 22 and opening on December 26. We will also be closing at 12 pm on December 29 and opening on January 2nd.



The Sanford Underground Research Facility partners with more than 2,000 scientists from more than 200 global institutions and universities, enabling groundbreaking research across multiple disciplines.

STRIKING GOLD IN SCIENCE

Unearthing Research at the Sanford Underground Research Facility

Frank Turner

frank.turner@sdrea.coop

Years ago, the Homestake Mine in Lead, South Dakota, lured prospectors with the promise of riches during the gold rush era. Yet today, the site where miners once delved for gold now hosts scientists pursuing their own discoveries, not for gold, but for discoveries in particle physics and dark matter at the Sanford Underground Research Facility.

The mine's transformation into a

state-of-the-art research facility really began in 1970 when Raymond Davis Jr. began what is now known today as the Homestake experiment, a research project that would forever change the entire landscape of western South Dakota. Seeing beyond the precious metal, Davis envisioned the Homestake Mine as the perfect location to conduct research on the illusive neutrino particle. Conducting neutrino research underground was a crucial component of the project because the deep

environment of the mine shielded his experiments from cosmic rays, allowing for more accurate detection of neutrinos. While the Homestake Mine was still in operation, Davis worked among the bustle of mining activities to conduct research, which led to groundbreaking discovery in neutrino research and ultimately to a Nobel Prize in 2002.

As Davis concluded his groundbreaking neutrino research, a chapter was closing for the Homestake Mine. According to the facility's website, Homestake was North America's largest and deepest gold mine at the time of its closing, producing approximately 41 million ounces of gold in its 126-year lifetime. When the mine was decommissioned in 2002, it threatened to not only leave a vast cavern in the earth but also a significant void in the local economy. Davis's success, however, prompted South Dakota's leadership to step in at a critical moment and

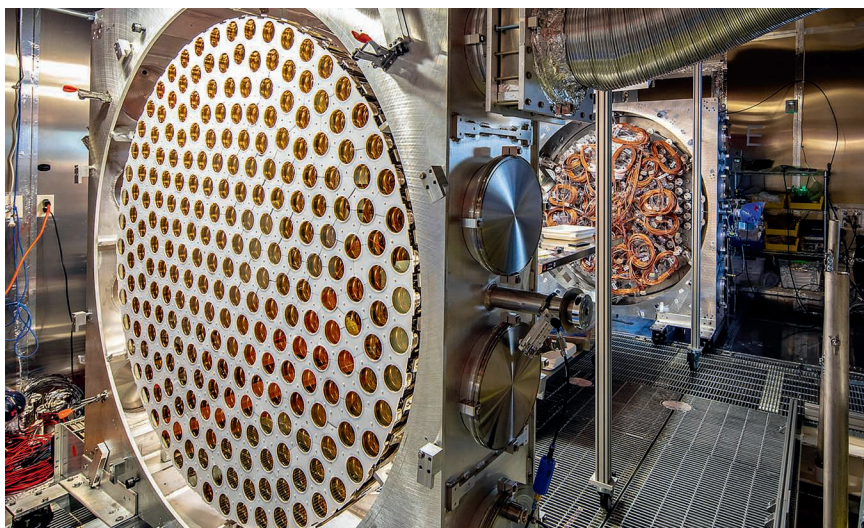
repurpose the mine into a bastion of scientific research.

Mike Ray, Media Relations Manager at Sanford Underground Research Facility, reflected on the state's response to the mine's closure. "Those in leadership at the time saw that this mine was closing and the terrible economic impact that the closure was going to have on the northern hills and this community, but they saw a light at the end of the tunnel," he said.

The light at the end of the tunnel became the Sanford Underground Research Facility. To advance one of South Dakota's most ambitious projects, the state secured a \$70 million donation from philanthropist T. Denny Sanford and a land donation from Barrick Gold Corporation, the mine's owner. The state then established the South Dakota Science and Technology Authority, which contributed an additional \$40 million to realize the project. These donations paved the way forward to begin construction on a space for some of the most advanced science projects ever made.

The herculean effort, Ray explained, was not only to mitigate the negative economic impact of the mine's closure but to create something even more impactful for South Dakota and its residents. Today, the Sanford Underground Research Facility collaborators include over 2,000 scientists from over 200 institutions and universities worldwide. It is expected to garner an estimated \$2 billion net economic impact in South Dakota by 2029.

Beyond its economic contributions, the lab holds potential for groundbreaking discoveries across various disciplines, including projects researching biology, geology, engineering or particle physics. Notably, the lab is currently home to LUX-ZEPLIN, the world's most sensitive dark matter detector and DUNE, the Deep



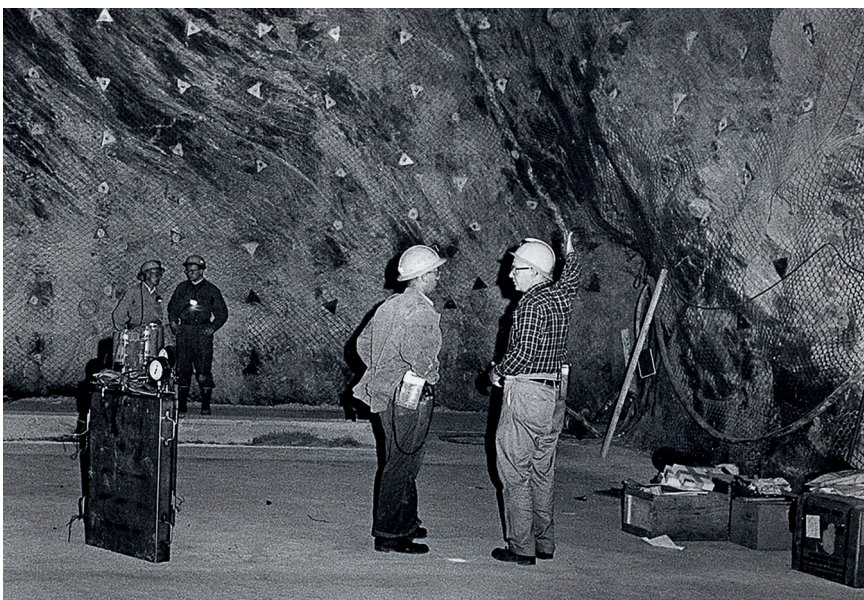
An array of the LUX-ZEPLIN, the world's most sensitive dark matter detector.
Photo Credit: Matthew Kapust, Sanford Underground Research Facility.

Underground Neutrino Experiment, among several other significant projects. While LUX-ZEPLIN and DUNE are distinct projects, both seek to provide fundamental insights into our current understanding of the laws of physics.

"There are so many examples of how fundamental research can take decades to lead to innovation," Ray said. "The beauty of this is that we don't always know where this research will

take us, but if we don't do this kind of exploration, we will never know the applications of these far-reaching projects."

Regardless of the outcome, the Sanford Underground Research Facility will continue to not only preserve the historic legacy of South Dakota's Homestake Mine, but also place South Dakota at the forefront of discovery and innovation for years to come.



A historic view of the Davis Cavern that hosted Ray Davis's Nobel Prize-winning solar neutrino experiment. The cavern has since been expanded and its walls have been coated with shotcrete, a type of spray-on concrete, to accommodate research on dark matter.
Photo Credit: Anna Davis, Sanford Underground Research Facility.



Shown in front of the True Dakotan building on Main Street in Wessington Springs are newspaper/print shop staff (left to right) Delia Atkinson, Office Manger; Kristi Hine, Editor/Publisher; Cathy Perry, Proofreader; shop dog Lincoln. Among the oldest buildings in Jerauld County, the building has always been a newspaper and/or print shop. Constructed in 1915, the True Dakotan recently underwent a complete renovation after a fire in June 2020.

SMALL TOWN NEWSPAPERS

Connecting Communities

Shannon Marvel

shannon.marvel@sdrea.coop

Rural, small-town newspapers are an important cohesive element that keep communities together.

Many of South Dakota's community newspapers have faced economic difficulties, yet their dedication to their mission is what drives them to find innovative ways to persist.

According to South Dakota NewsMedia Association's Executive Director David Bordewyk, a combination of factors have made it difficult for small, community newspapers to thrive

as they once did in decades past.

"There's a lot of advertising that used to be in traditional media that has moved into a digital realm such as Google, Facebook and other platforms. That's been a huge disruption. Then there's the whole thing about the internet and how people consume information," Bordewyk said.

The pandemic had a major impact on the newspaper business and accelerated online advertising.

Inflation has also increased production and postal service costs considerably, which has made it tough for small, rural newspapers to balance their books and maintain profits.

"Almost all of our community newspapers rely on a postal service to deliver the newspaper to subscribers. And we've seen a 40 percent rise in postal rates over the last three years," Bordewyk said.

How do newspapers deal with that?

Some newspapers have done a good job of capturing that digital market, Bordewyk said. Others have really gotten aggressive at increasing their prices, with some having to increase subscription rates from \$40 to \$80 per year.

Regardless, there's value in a community newspaper.

Who else is going to consistently cover city council and county commission meetings, or local school activities and sports? Kristi Hine knows that value well.

Hine is the publisher and editor of the True Dakotan, a weekly newspaper that covers local happenings in Jerauld County, based in Wessington Springs.

"Newspapers play such an important role to keep communities together," Hine said.

"We cover everything from local government to high school sports to features. I just did a feature about these women who did a Christmas village exhibit at the county courthouse. It's peeling back the layers and truly telling the community's story. Without the local newspaper, there's no one to tell that story. Larger outlets may come cover a story if you have a tornado or your sports team is doing really well, but it's the community newspaper that'll be listening in on what the city council is going to say at their meeting," Hine said.

Community newspapers, in that sense, really are the eyes and ears for the community. The important goal of the community newspaper is to connect the community, Hine said. "Especially in this world when it's so easy to be on different sides of the spectrum. Community newspapers are the fabric that holds communities together, no matter what side of the aisle their readers land on," she said. "Especially in this world when it's so easy to be on different sides of the spectrum. Community newspapers are the fabric that keeps communities together, no matter what aisle their readers land on," she said.

Hine bought the True Dakotan eight years ago in March of 2015. Originally from Phoenix, Arizona, the newspaperwoman

has found herself enthralled with the small Jerauld County community.

Over the last eight years, Hine said she's seen more changes in the newspaper industry than her predecessor saw in the last 40 years.

"There's been a great deal of change," Hine said.

She's gotten more creative with advertising, using social media as a tool to promote local businesses. If a business is hosting an event or wants to promote a special sale, the business will do a Facebook live with Hine.

The True Dakotan also offers an online E-Edition and weekly newsletter, though the original print product is still the largest circulation.

Advertising and marketing aside, it all comes down to local news content.

"That's the driving force as we enter this evolution of newspapers. We're at the crux," Hine said.

To the northeast in Day County, the Reporter and Farmer newspaper is being led by Amanda (Fanger) Dulitz, a young reporter-turned-publisher, who recently purchased operation last year.

"Community newspapers are the lifeblood of a community. The strength of a community is reflected in the strength of their community newspaper. We're the bulletin board of the community. We're the cheerleaders of the community. We keep people connected," Dulitz said.

Dulitz found her passion for rural newspapers in South Dakota as soon as she picked up the reporter pad in 2007 after graduating from high school.

She worked at the Onida Watchman for a short time before heading east to Webster, where she took on the role as a news reporter for the Reporter and Farmer. Fast forward a couple decades and now Dulitz is the owner of the Reporter and Farmer.

She noted that costs were pretty stable at the newspaper for awhile, but seemed to sharply increase as soon as she signed the dotted line giving her ownership of the

operation.

"I'll probably have to take a look at my rates and lock in my rates for the next year. Everything is just going up, and it impacts the bottom line overall and you've got to do what you've got to do," she lamented.

But without the support of subscribers and advertisers, and really the entire community as a whole, the newspaper couldn't fulfill its purpose of keeping everyone on the same page and in the know.

The relationship between a community newspaper and the community itself is something Dulitz compares to a team of horses.

"The newspaper keeps everybody in an area knowing what's going on and pulling in the same direction. One horse can only pull so much, but if you put them together they can pull double.

That community unity – the newspaper – is what yokes people together and gets people pulling together," Dulitz said.

She understands that without the community support, there'd be no newspaper.

"We've got some of those readers when the paper gets back from the press on



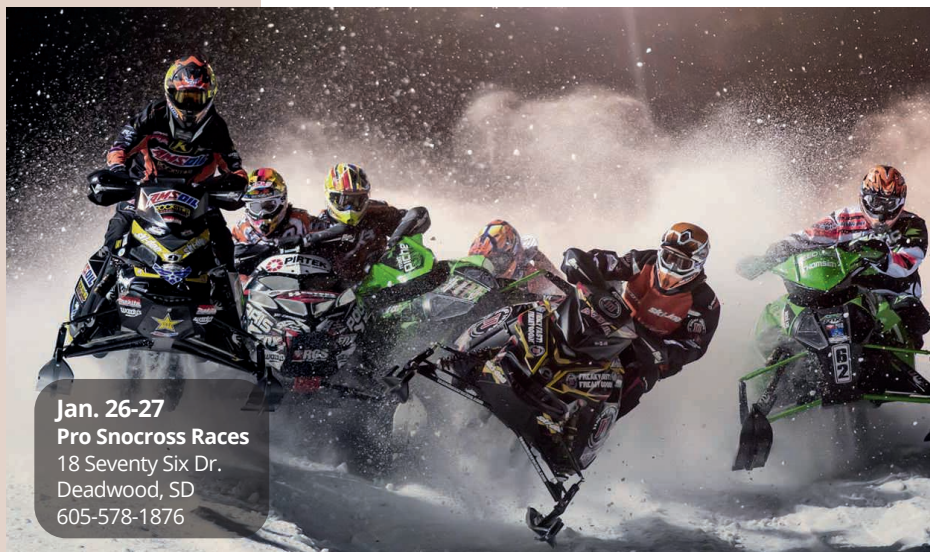
Kristi Hine, editor/publisher, True Dakotan and Delia Atkinson, office manager

Friday – they're standing there waiting for the paper to be dropped off. They're the first ones in the door letting us know about some breaking news event that we haven't heard about yet," she said.

"Constantly, readers and advertisers let us know what we're doing right and what we're doing wrong. We need that. We need that mutual push and pull. We recognize that our readers and advertisers are key to our business and we appreciate it."



From left is Publisher Amanda (Fanger) Dulitz, circulation manager Pat Sass, graphic designer Megan Garry, writer Kevin Winter, sales representative Kirstin Ure (front), print tech Jessica Washenberger and proofreader Linda Holberg.



Jan. 26-27
Pro Snocross Races
 18 Seventy Six Dr.
 Deadwood, SD
 605-578-1876

To have your event listed on this page, send complete information, including date, event, place and contact to your local electric cooperative. Include your name, address and daytime telephone number. Information must be submitted at least eight weeks prior to your event. Please call ahead to confirm date, time and location of event.

JAN. 5
Granite Sports Fantastic Friday
 3 p.m.
 Hill City, SD

JAN. 6
Live on Stage
 High Country Guest Ranch
 Hill City, SD

JAN. 10
45th Annual Ranchers Workshop
 9 a.m.
 Sinte Gleska University Multi-Purpose Center
 Mission, SD

JAN. 12
Granite Sports Fantastic Friday
 3 p.m.
 Hill City, SD

JAN. 13
Knights of Columbus Bowling Tournament
 1 p.m.
 Meadowood Lanes
 Rapid City, SD

JAN. 20
Live on Stage
 High Country Guest Ranch
 Hill City, SD

JAN. 23
A Trip to Chile (Reservations Required)
 6:30 p.m.
 Mangiamo
 Hill City, SD

JAN. 25
A Trip to Chile (Reservations Required)
 5:30 p.m.
 Mangiamo
 Hill City, SD

JAN. 26
Granite Sports Fantastic Friday
 3 p.m.
 Hill City, SD

JAN. 26-27
Reliance Area Community Development 29th Annual Dinner Theater
 6 p.m.
 Reliance Legion Hall
 Reliance, SD

FEB. 3
Live On Stage
 High Country Guest Ranch
 Hill City, SD

FEB. 3
Lake Hendricks Fishing Derby
 11a.m.
 City Boat Landing
 Hendricks, MN

FEB. 10
Polar Bear Chili Cook-Off
 11a.m.
 Main Street
 Hill City, SD

FEB. 10
Tour de Chocolate
 Main Street
 Hill City, SD

FEB. 17
Live On Stage
 High Country Guest Ranch
 Hill City, SD

FEB. 18-20
MASC presents Disaster! the Musical
 Vesta Community Center
 Vesta, MN

FEB. 20
A Trip to Portugal
 6:30 p.m.
 Mangiamo
 Hill City, SD

FEB. 22
A Trip to Portugal
 6:30 p.m.
 Mangiamo
 Hill City, SD

FEB. 23-24
Women in Blue Jeans Conference
 Highland Conference Center
 Mitchell, SD

Note: Please make sure to call ahead to verify the event is still being held.